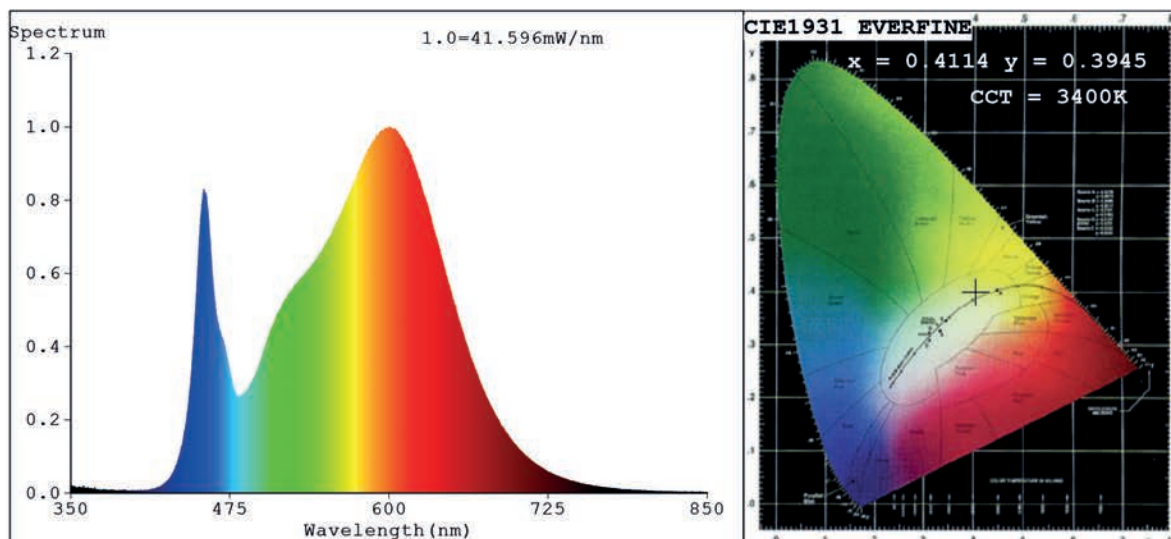


Spectrum Test Report



Color Parameters:

Chromaticity Coordinate: $x=0.4114$ $y=0.3945$ $u'=0.2381$ $v'=0.5137$
 CCT=3400K(Duv=0.0003) Dominant WL:Ld =581.1nm Purity=41.9%
 Ratio:R=20.8% G=76.0% B=3.3%;;Peak WL:Lp=600.2nm FWHM=138.4nm
 Render Index:Ra=83.0 CRI=77.1 TM30:Rf=82 Rg=94
 R1 =82 R2 =92 R3 =96 R4 =80 R5 =82 R6 =89 R7 =83
 R8 =60 R9 =7 R10=81 R11=79 R12=65 R13=85 R14=98 R15=75

Photo Parameters:

Flux = 2168 lm Eff. : 136.87 lm/W Fe = 6.526 W

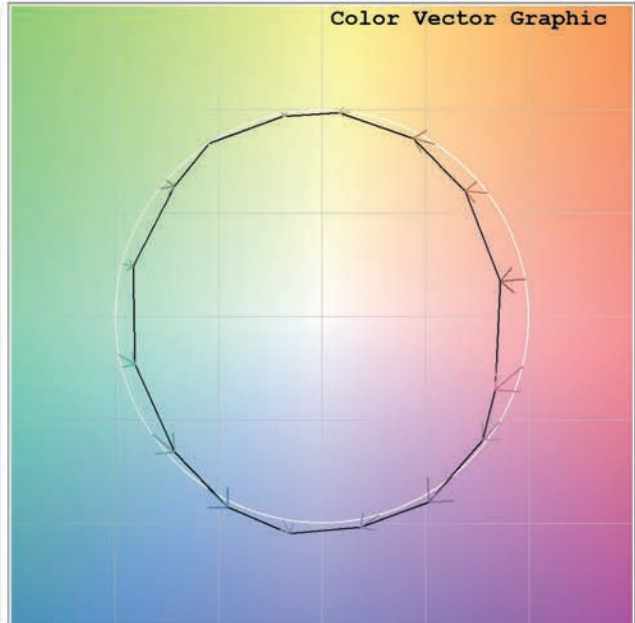
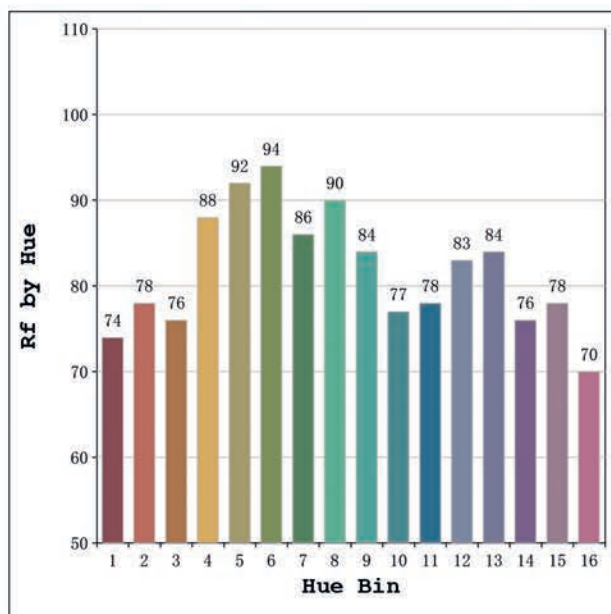
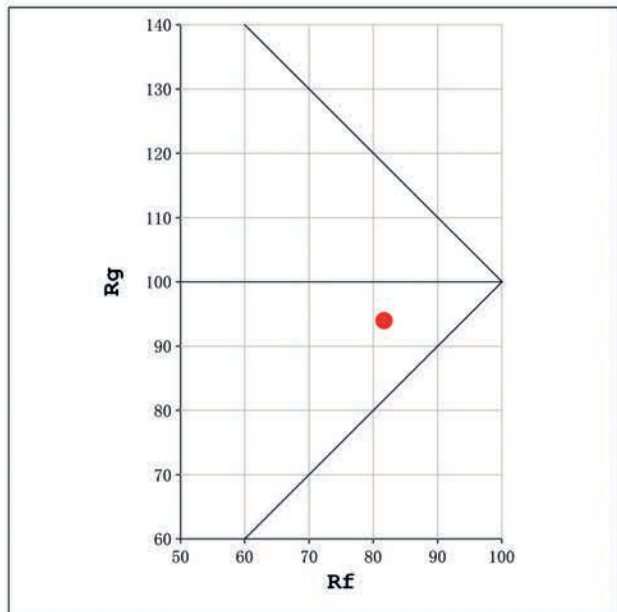
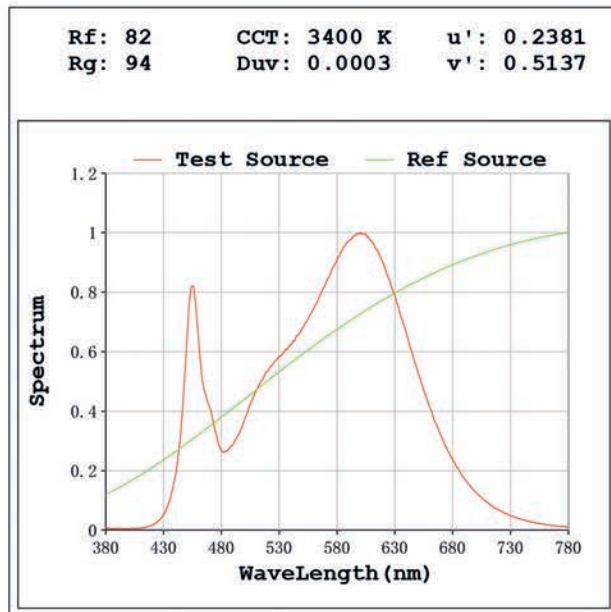
Electrical parameters:

V = 23.998 V I = 0.6600 A P = 15.84 W PF = 1.000

Status: Integral T = 421 ms Ip = 35238 (54%)

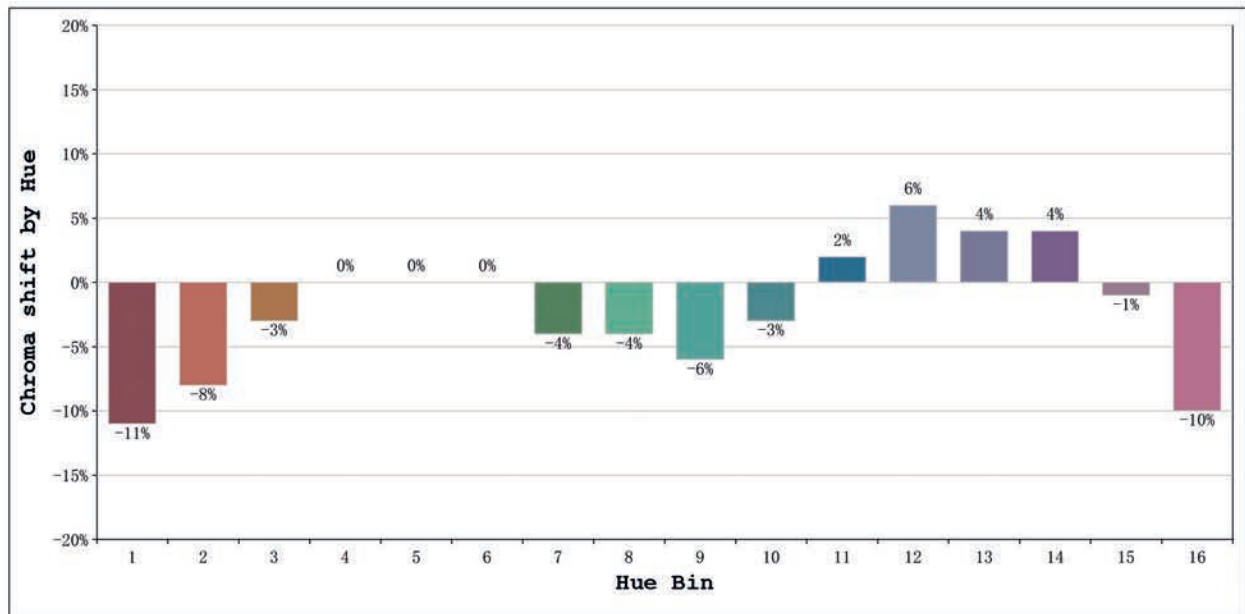
Model:Ecoled Elite 15 3500k
 Tester:MªAngeles
 Temperature:25Deg
 Manufacturer:Luz Negra

Number: 31.210
 Date:2025-06-02 11:04:12
 Humidity:40%
 Remarks:100cm tira flexible



Model:Ecoled Elite 15 3500k
 Tester:Mª Angeles
 Temperature:25Deg
 Manufacturer:Luz Negra

Number: 31.210
 Date:2025-06-02 11:04:12
 Humidity:40%
 Remarks:100cm tira flexible



			Graphic shift(%)	
Hue Bin	Hue Angle	Rf	Chroma	Hue
1	0.0° - 22.5°	74	-11	1
2	22.5° - 45.0°	78	-8	7
3	45.0° - 67.5°	76	-3	10
4	67.5° - 90.0°	88	0	5
5	90.0° - 112.5°	92	0	2
6	112.5° - 135.0°	94	0	0
7	135.0° - 157.5°	86	-4	-4
8	157.5° - 180.0°	90	-4	0
9	180.0° - 202.5°	84	-6	6
10	202.5° - 225.0°	77	-3	13
11	225.0° - 247.5°	78	2	13
12	247.5° - 270.0°	83	6	4
13	270.0° - 292.5°	84	4	-9
14	292.5° - 315.0°	76	4	-15
15	315.0° - 337.5°	78	-1	-11
16	337.5° - 360.0°	70	-10	-13

Model:Ecoled Elite 15 3500k
 Tester:MªAngeles
 Temperature:25Deg
 Manufacturer:Luz Negra

Number: 31.210
 Date:2025-06-02 11:04:12
 Humidity:40%
 Remarks:100cm tira flexible